



# Manestream Ltd Environmental Newsletter

Making the workplace and the world more green



MANESTREAM LTD

Volume 1, Issue 5

Fri. Oct 30th, 2009

## Copenhagen : The Kyoto Sequel

Over a decade ago the United Nations Framework Convention for Climate Control (UNFCCC) were working on the fine details of the 1997 Kyoto Protocol. And in particular getting all the industrial nations on board. That agreement, however, is due to expire soon and the powers that be are hastily working on its sequel.

Which is why the Danish capital of Copenhagen will be host to 20,000 delegates from 192 countries to get the message across and give it the best chance of success.

Back in 1997 the majority of industrial nations (but not the USA) agreed to reduce greenhouse gas emissions on average by 5.2% for the five year period 2008 to 2012 compared to 1990 levels. The next target is to get all the world leaders to agree to reduce global greenhouse gas emissions so that the global temperatures do not increase by more than 2 degrees centigrade. Especially President Obama, who clearly has more of an environmental pedigree than his predecessor, as the USA is one of the leading producers of greenhouse gases.

The reason an agreement is so important is because it is believed if temperatures increase by more than 2 degrees, then it could trigger cataclysmic climate changes that may affect millions all over the world. Rises in sea levels will result in coastal flooding, causing population migration on a scale never seen before, requiring governments to provide housing for those displaced on a scale not seen since the Second World War.

It will also result in the destruction of a considerable amount of arable land. Land that is already overburdened by the demands of an ever increasing world population.

The list of possible consequences goes on and on. However, they can be prevented. And, despite what you may feel we all can make a difference. And it all starts by being better informed to make the right choices.

So next time you come across an article about global warming or climate change, don't just ignore it and turn the page. Read it. You just don't know how much of a difference you can make until you try.

## End of the Line

Recently there was a film on Channel 4 called "End of the Line". Admittedly it was a documentary and it was produced by environmentalists, so not everyone will have seen it. However, Ted Danson of "Cheers" fame did the narration, so that must count for something. The point is that this film highlighted the damage we are all doing to our own food chain by ignoring the amount of overfishing done in the seas all over the world. As already stated, the least we should do is become better informed so we can make better choices. So if you get a chance, rent out the movie, or at least go to the website [www.endoftheline.com](http://www.endoftheline.com) and read about it.

### In this Month's Issue:

<i>Copenhagen : The Kyoto Sequel</i>	1
<i>End of the Line</i>	1
<i>Meet Darren Gardner</i>	2
<i>Manestream Ltd's Environmental Policy</i>	2
<i>September 2009 Carbon Footprint Statistics</i>	3
<i>Waste Management</i>	4
<i>Vehicle Management</i>	4
<i>Energy Management</i>	4

### Environmental Objectives

- To reduce by >10% the fuel usage of the company's fleet, and hence emissions, within 12 months.
- To reduce by > 10% the energy used at Manestream Ltd's offices within 12 months.
- To reduce Manestream Ltd's carbon footprint by > 10% overall within 12 months.



EMS 541804

## Meet Darren Gardner

**Welcome to the new member of the Sales Team : Happy!**



### **Where are you from?**

I'm an Essex boy through and through. I live in a little town called Chafford Hundred, which is next to the Lakeside Shopping Centre.

### **How long have you been at Manestream?**

I'm afraid I'm a newbie. I've only been here just 6 weeks.

### **What is your job title?**

Regional Sales Consultant.

### **What do you most enjoy about your job?**

Learning all the aspects of the job. I also enjoy getting out and meeting new people, especially getting them to hand over their money.

### **What is a typical working day like at Manestream for you?**

Talking to new and old customers and making new opportunities, planning my week, and making as many appointments as possible.

### **What are your views on global warming?**

We all need to start thinking about the little things today which will help in all of our futures and our children's futures.

### **Do you recycle at home?**

Yes, my wife has the biggest recycle bin. It's very similar to the ones you find at your local supermarket, and our weekly mission is to fill it !!!!!

### **What do you enjoy doing in your free time?**

When I'm not working or getting bossed around by my wife I'm usually playing hide and seek with my 20 month old boy.

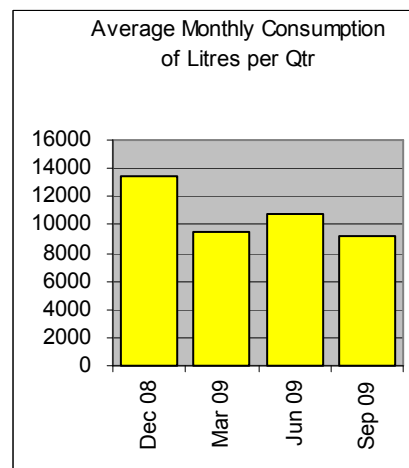
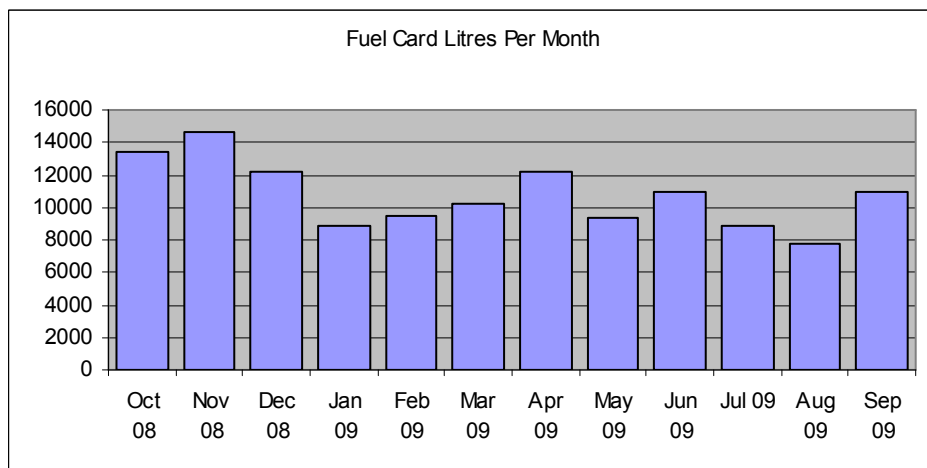
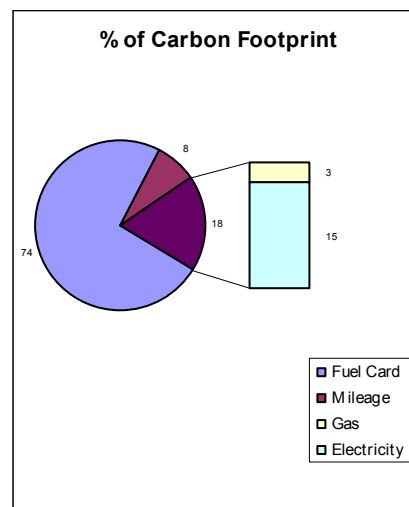
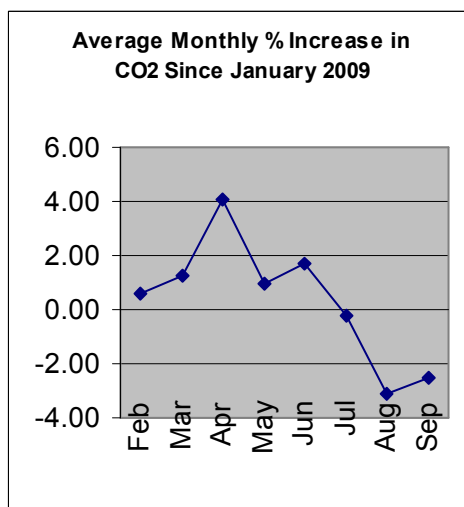
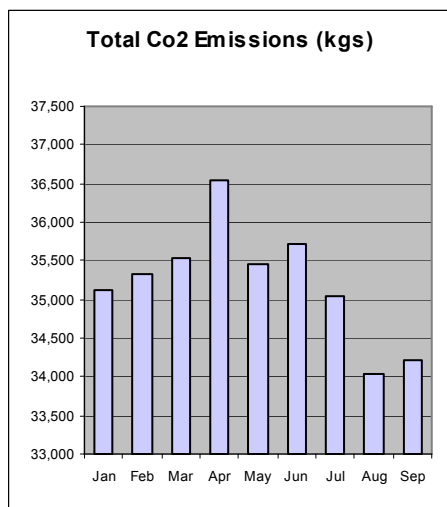
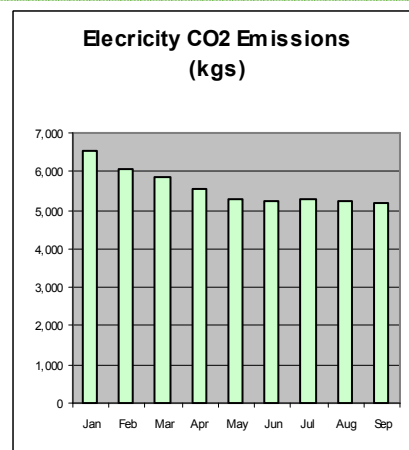
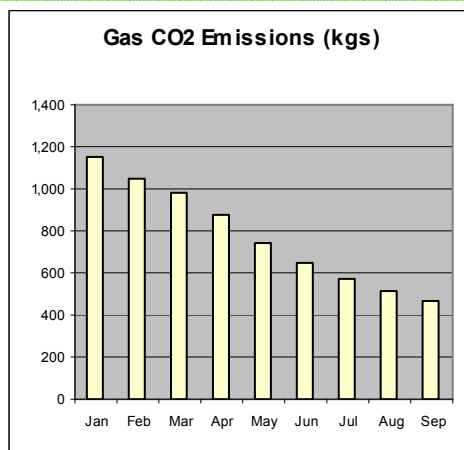
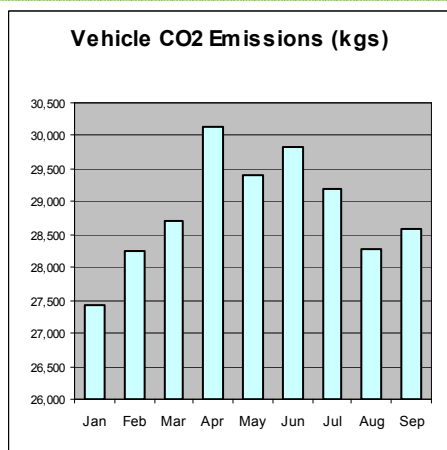
## Manestream Ltd's Environmental Policy

Manestream Ltd recognises its responsibilities for the environmental impacts of its day to day activities and is committed to minimising the potentially detrimental effects of these activities. This policy gives a platform to integrate environmental factors into our day to day business decisions.

- Continual environmental improvement by allowing for the adoption of innovation and new ideas.
- Monitoring environmental performance by setting objectives and targets.
- Regulatory compliance by operating within all legal requirements and codes of practice.
- Management of environmental impact is effected by prevention of pollution, controlling reduction of emissions, conserving resources, increasing transport efficiency and minimising waste. We believe that this can only be achieved by our relationships and partnerships by:
- Empowering our employees by training them to manage environmental issues as an integral part of their jobs
- Influencing our supply chain partners to improve environmental performance.
- Understanding communities and our customers concerns on environmental issues and being responsive to these concerns.
- Reporting and communicating our environmental performance openly to all Manestream Ltd stakeholders and public.

In summary, the principal elements of the Environmental Policy are to establish and maintain processes capable of achieving continual improvement towards reducing the environmental impact of Manestream Ltd operations, and meeting the environmental objectives, and to establish and maintain the EMS satisfying the requirements of BS EN ISO 14001:2004 forming a framework for the setting of environmental objectives.

# September 2009 Carbon Footprint Statistics



Lord Stern suggests that we should give up eating meat to help save the planet. UN figures estimate that 15% of all green house gas emissions are a result of meat production (deforestation for cattle ranching and production of soy for animal feed).

(Source: [www.timesonline.co.uk](http://www.timesonline.co.uk))

“The North-east England is to become the UK’s electric car capital, with plans to install up to 1,000 charging points around Newcastle and Gateshead over the next two years.”

(Source: [theenvironmentalist.com](http://theenvironmentalist.com) / [www.dft.gov.uk](http://www.dft.gov.uk))

## Waste Management Program

The number of black dustbin bags taken for recycling between Mon, Sep 29th and Fri, Oct 30th was (21 weeks cumulative in brackets): Paper 23 (186), aluminium cans 3 (9), and plastic cups and bottles 3 (14). We have also had the 1100 litre red recycle bin (cardboard waste) emptied twice, too.

Please can staff pay attention to where they are disposing of their waste, as some members of staff are still occasionally disposing of cardboard and plastic cups in the paper bins.

## Vehicle Management Program

Earlier this month we had a health and safety training day at our Enfield office whereby staff underwent several occupational training courses. As this meant virtually all the company vehicles were at our offices, we gave departmental managers the task of performing vehicle checks on the vehicles being driven by those in other departments. This proved successful as it enabled us to determine which vehicles needed repairs to chips in windscreens, etc. More important it confirmed that all the tires on virtually all the vehicles had suitable air pressure which is ideal for motoring and assists on fuel consumption.

We have also purchased two new Mercedes vans for Water Services to replace an older model Vito and a leased Transit that together had done in-excess of 180,000 miles between them. The new vehicles should have improved fuel consumption compared to the older ones and reduced CO2 emissions.

## Energy Management Program

Hilton Heating were at our offices on Thursday, October 29th and installed the new combi-boiler, mentioned last month, to provide heating to the offices at the east end of the building and provide hot water to the main kitchen upstairs.

While adjusting for the hour change on the timers used on our heavy duty printers and copiers, due to the end of British Summer Time, we increased the time that the power is being supplied to the printers by half an hour at the end and beginning of each day. This will save up to 5 hours a week where the equipment has not been turned off when

**For those interested in finding out more about climate change check out the Met Office website. <http://www.metoffice.gov.uk/climatechange/guide/>**

### Contact Details

Paul J White, Environmental Manager  
Unit 1, Great Cambridge Ind. Est. Lincoln Rd,  
Enfield, Middlesex. EN1 1SH  
Telephone: 020 8805 8282  
Direct Dial: 020 8344 1905  
Mobile: 075 1599 8804  
E-mail: paul.white@manestream.co.uk

### Coming next month

The next newsletter will be emailed to you on Friday, November 27th and will include the following:

- Oct 2009 Carbon Footprint Statistics
- Monthly Employee Pen Picture
- Environmental Article
- Updates on our environmental initiatives

**Making the workplace and the world more green**